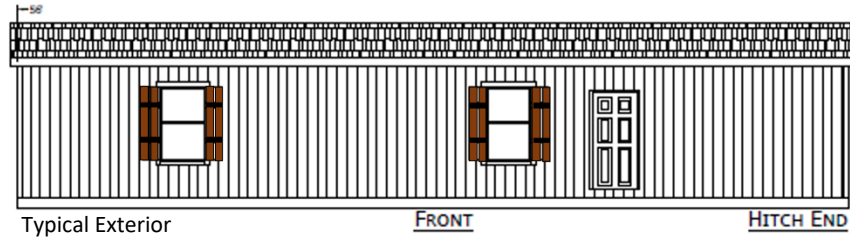


Winchester

Singlewide Series



Construction

Exterior Shutters, Front Door Side and End
Recessed Frame
2 X 6 Floor Joists 16" OC (2x8 on 15' Wide)
19/32" T&G OSB Decking
2 X 6 Exterior Walls 16" OC
8'6" Sidewall Height w/ Flat Ceiling
30# Roof Load
N4:12 Roof Pitch
R-28 Ceiling Insulation
R-22 Floor Insulation
R-19 Wall Insulation
6" Leading & Tailing Eaves
Front-6" Eaves (Nominal)
Rear - 6" Eaves (Nominal)
Detachable Hitch

Bath(s)

2 pc Tub/Shower Combo in Both Baths
Satin Nickel Towel & Tissue Holders in Both Baths
36" Lavy Height- Master Bath / 36" in Guest Bath
Elongated Toilet in Both Baths
Bath Vent Fans w/ Lights in Both Baths
24"x40" SE Bath Vanity Mirrors in Both Baths
ABS Sinks & Dual Handle Faucets in Both Baths
4" Can Light Above Sink in Both Baths

Exterior

Architectural Shingles
Vertical Siding with Housewrap
Exterior Window Trim
Vinyl Low-E Insulated Windows
8" (nominal) Eave Fascia
Wood Soffit & Facia
Front Door - 36" Fiberglass w/ Peep
Rear Door - 36" Fiberglass w/Peep
Hose Bib on Front Door Side

Interior

Floor Registers Only
Skip Troweled Ceiling Finish
1/2" T&T w/Rounded Corners T/O
EGGSHELL Interior Paint Walls & Ceiling
Cove Moulding Throughout (0093)
Wire Ventilated Closet Shelving
356 Door Moulding
356 Window Moulding
356 Base Moulding in Lino Areas
Vinyl Flooring in Wet Areas & Some Closets
Stain-Resistant Carpet
3/8" 5# Rebond Pad
Vinyl Flooring in Living Room
2-Panel White Interior Passage Doors
Shelf Over Washer / Dryer Area

Kitchen

18 CF Refrigerator
Deluxe Electric Range
Stand-Alone Rangehood
Bank of Drawers in Kitchen
Laminate Countertop & Edging
Laminate Backsplash
Crown Moulding on Kitchen Overheads
Stainless Steel Kitchen Sink
Single Lever Faucet w/Sprayer
42" Overhead Doors w/2 Adjustable Shelves
Hardwood Cab Doors w/ MDF Stiles
Shelf Over Refrigerator
Metal Drawer Guides

Electrical

Switch to Receptacle in Living Room
Satin Nickel Bedroom Ceiling Lights
Prep for Washer/Dryer-ELEC
Toggle Light Switches
Main Water Shut Off Valve
Shut-off Valves Throughout
Porch Light- Front & Rear
Furnace - Standard Electric
30 Gallon Elec Water Heater
Exterior GFI Recep
200 Amp Panel Box

Effective: 2/23/23
Revised: 2/23/23

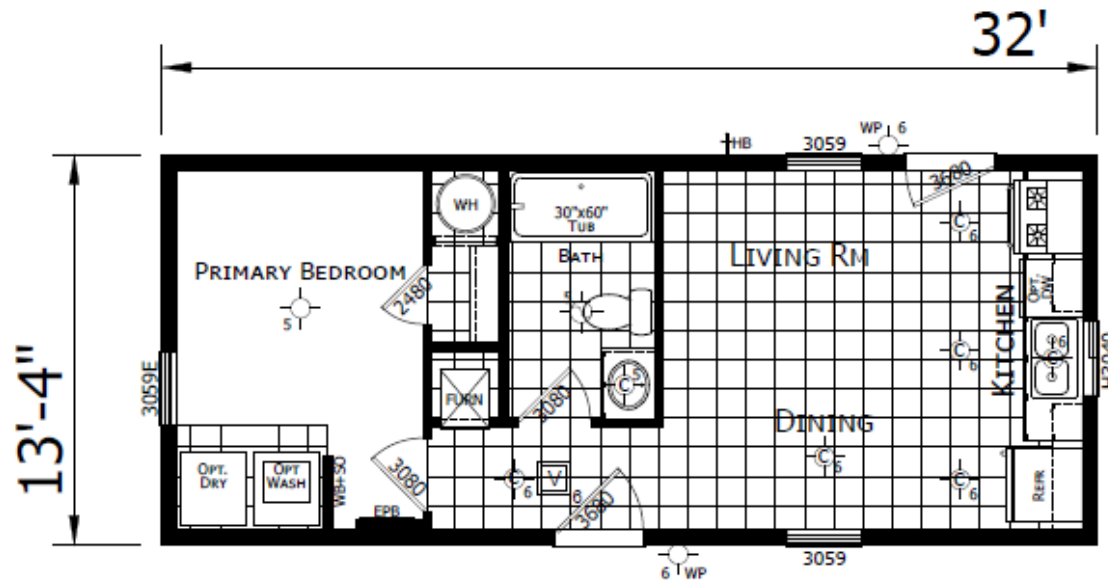
Winchester

MODEL 1432H11FL1

1 BEDROOM, 1 BATH
ACTUAL SIZE: 13'4" X 32'
TOTAL AREA: 427 SQ. FT.

CHAMPION®
HOME BUILDERS

IDAHO



Due to continuous product development and improvement, prices, specifications and materials are subject to change without notice or obligation. Square footage and other dimensions are approximate. Images such as rendering, photos and floor plans may be shown with optional features and/or third-party additions that may not be available in all regions.

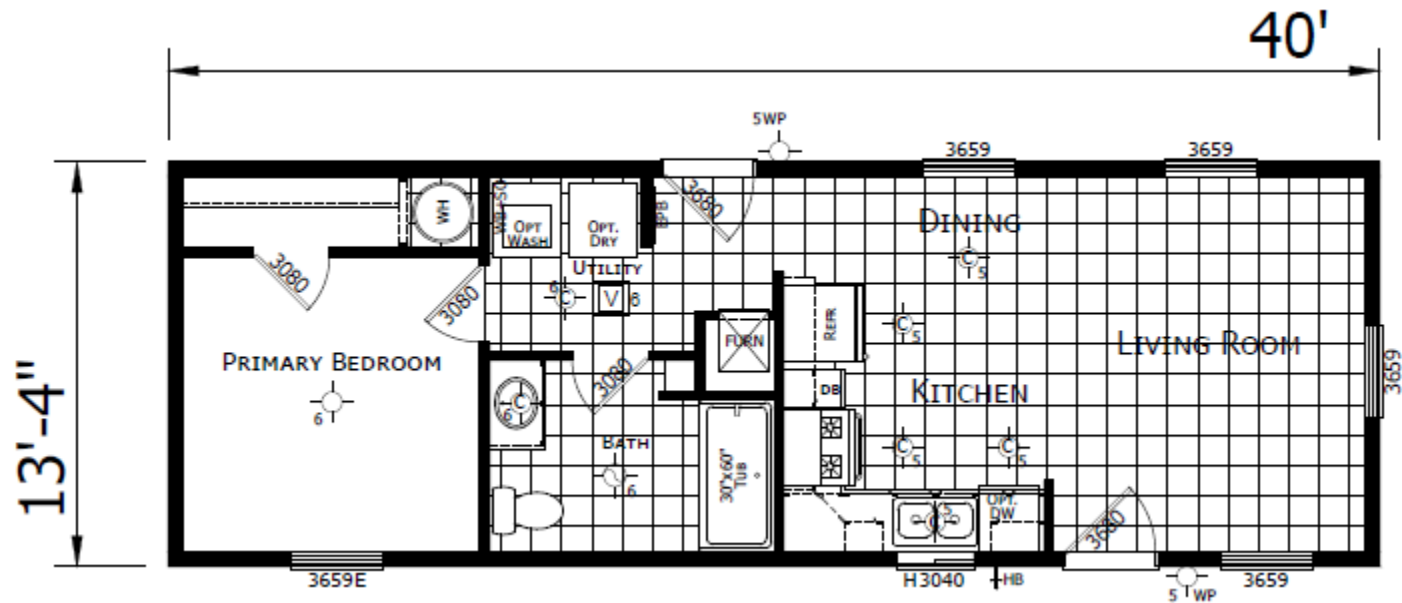
Winchester

CHAMPION®
HOME BUILDERS

MODEL 1440H11001

1 BEDROOM, 1 BATH
ACTUAL SIZE: 13'4" X 40'
TOTAL AREA: 533 SQ. FT.

IDAHO



Due to continuous product development and improvement, prices, specifications and materials are subject to change without notice or obligation. Square footage and other dimensions are approximate. Images such as rendering, photos and floor plans may be shown with optional features and/or third-party additions that may not be available in all regions.

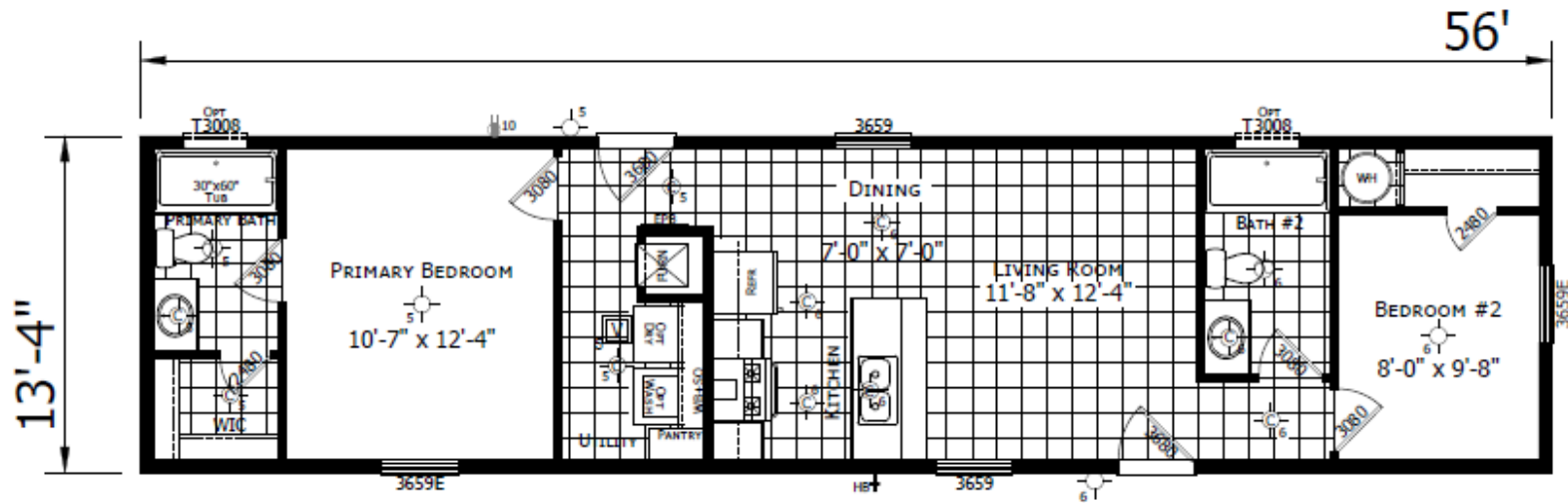
Winchester

CHAMPION®
HOME BUILDERS

MODEL 1456H22A4A

2 BEDROOM, 2 BATH
ACTUAL SIZE: 13'4" X 56'
TOTAL AREA: 747 SQ. FT.

IDAHO



Due to continuous product development and improvement, prices, specifications and materials are subject to change without notice or obligation. Square footage and other dimensions are approximate. Images such as rendering, photos and floor plans may be shown with optional features and/or third-party additions that may not be available in all regions.

Winchester

CHAMPION®
HOME BUILDERS

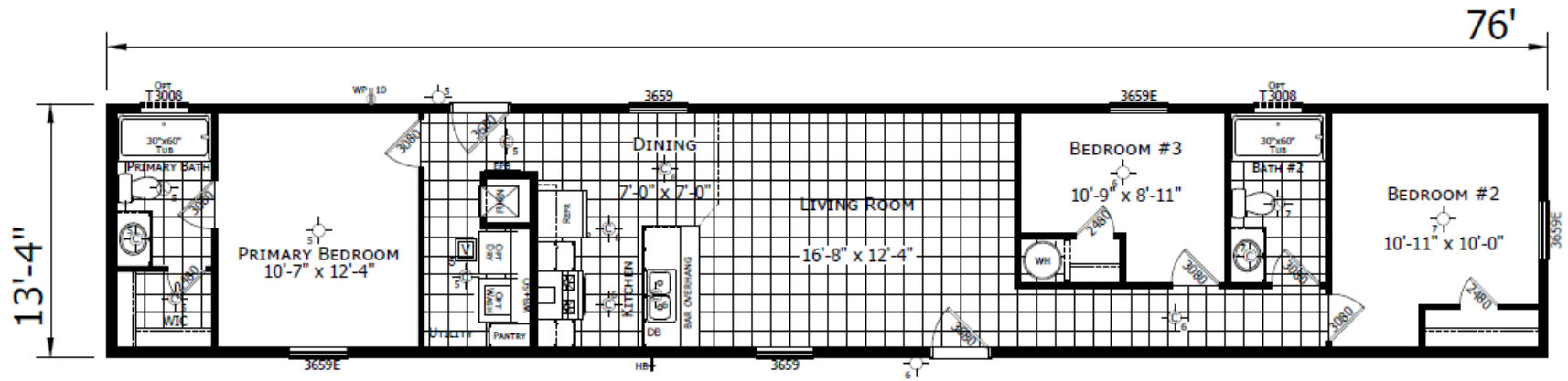
MODEL 1476H32A4A

3 BEDROOM, 2 BATH

ACTUAL SIZE: 13'4" X 76'

TOTAL AREA: 1,013 SQ. FT.

IDAHO



Due to continuous product development and improvement, prices, specifications and materials are subject to change without notice or obligation. Square footage and other dimensions are approximate. Images such as rendering, photos and floor plans may be shown with optional features and/or third-party additions that may not be available in all regions.

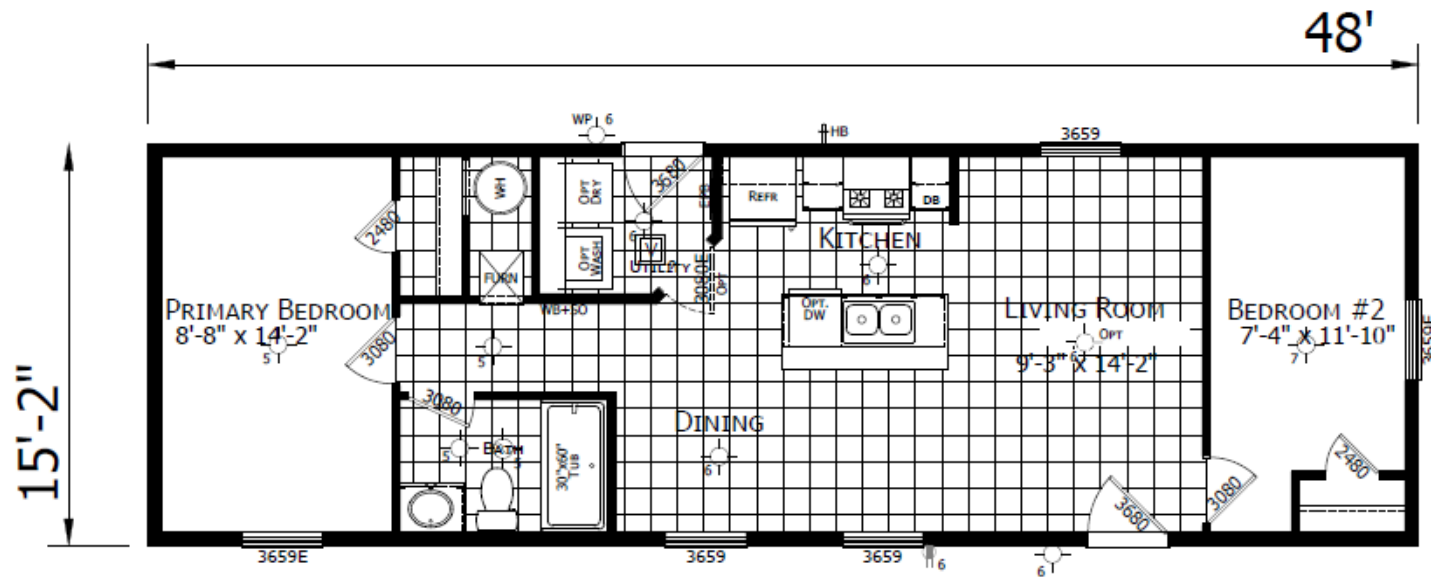
Winchester

CHAMPION®
HOME BUILDERS

MODEL 1648H21A6H

2 BEDROOM, 1 BATH
ACTUAL SIZE: 15'2" X 48'
TOTAL AREA: 728 SQ. FT.

IDAHO



Due to continuous product development and improvement, prices, specifications and materials are subject to change without notice or obligation. Square footage and other dimensions are approximate. Images such as rendering, photos and floor plans may be shown with optional features and/or third-party additions that may not be available in all regions.

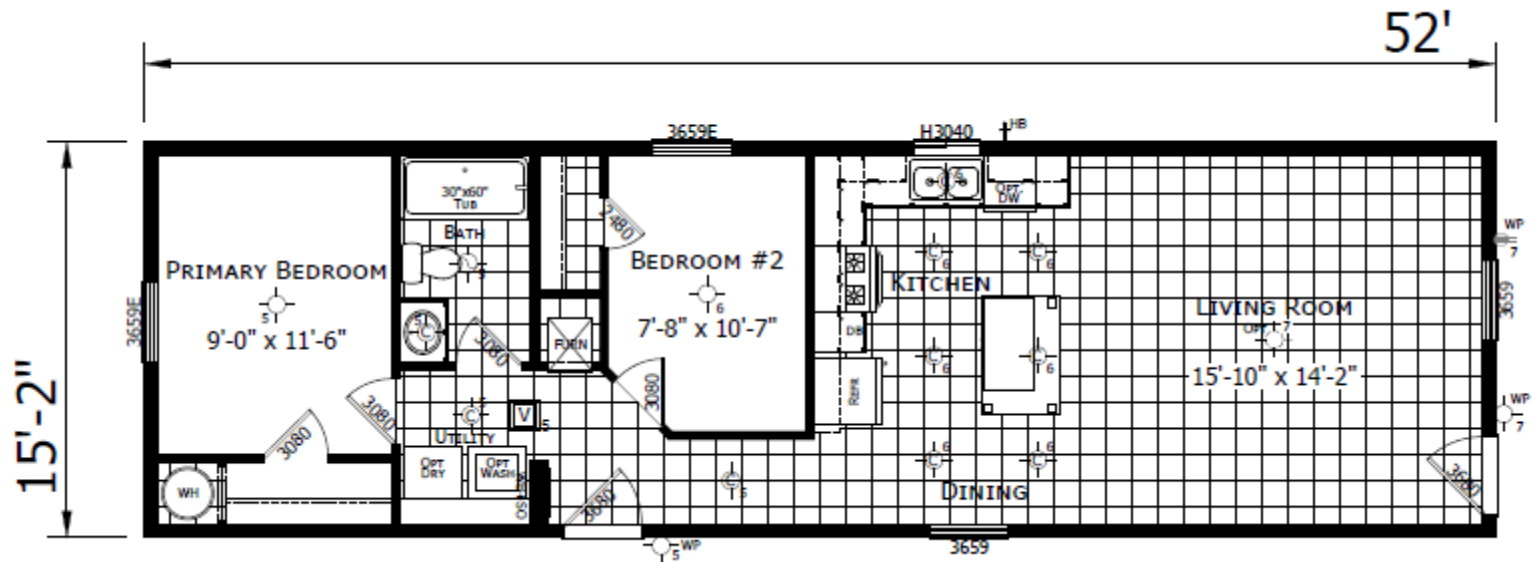
Winchester

CHAMPION®
HOME BUILDERS

MODEL 1652H21A6G

2 BEDROOM, 1 BATH
ACTUAL SIZE: 15'2" X 52'
TOTAL AREA: 788 SQ. FT.

IDAHO



Due to continuous product development and improvement, prices, specifications and materials are subject to change without notice or obligation. Square footage and other dimensions are approximate. Images such as rendering, photos and floor plans may be shown with optional features and/or third-party additions that may not be available in all regions.

Winchester

CHAMPION®
HOME BUILDERS

MODEL 1656H32192

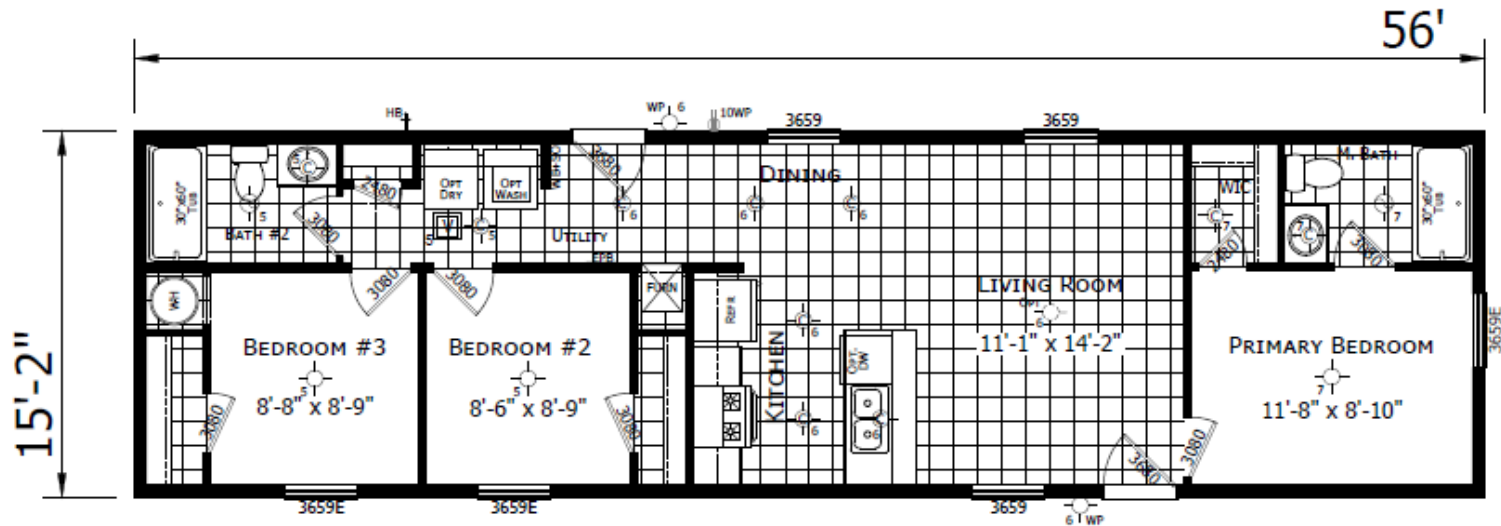
3 BEDROOM, 2 BATH

ACTUAL SIZE: 15'2" X 56'

TOTAL AREA: 849 SQ. FT.

AKA Model 1656H32001

IDAHO



Due to continuous product development and improvement, prices, specifications and materials are subject to change without notice or obligation. Square footage and other dimensions are approximate. Images such as rendering, photos and floor plans may be shown with optional features and/or third-party additions that may not be available in all regions.

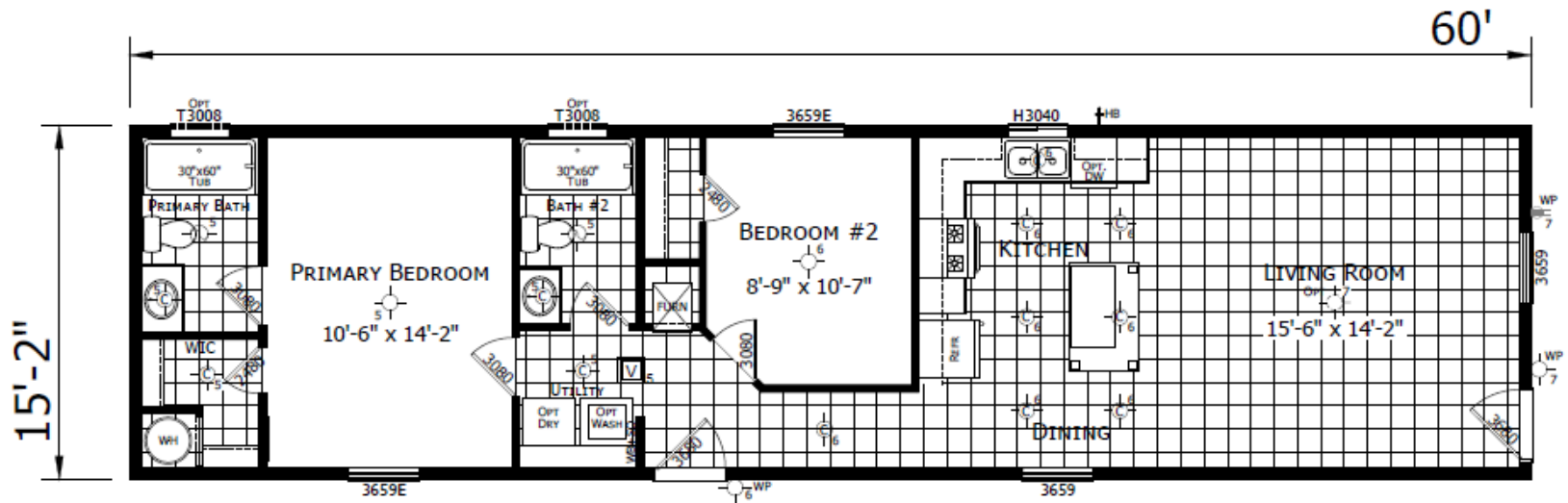
Winchester

CHAMPION®
HOME BUILDERS

MODEL 1660H22A6G

2 BEDROOM, 2 BATH
ACTUAL SIZE: 15'2" X 60'
TOTAL AREA: 910 SQ. FT.

IDAHO



Due to continuous product development and improvement, prices, specifications and materials are subject to change without notice or obligation. Square footage and other dimensions are approximate. Images such as rendering, photos and floor plans may be shown with optional features and/or third-party additions that may not be available in all regions.

Winchester

CHAMPION®
HOME BUILDERS

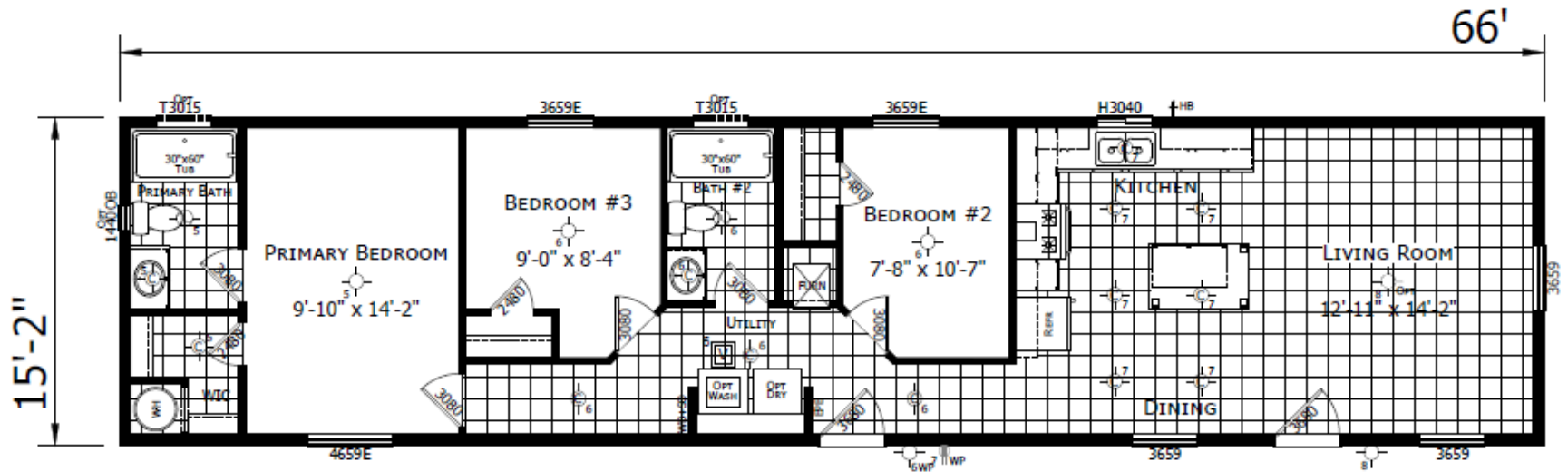
MODEL 1666H32A6G

3 BEDROOM, 2 BATH

ACTUAL SIZE: 15'2" X 66'

TOTAL AREA: 1,001 SQ. FT.

IDAHO



Due to continuous product development and improvement, prices, specifications and materials are subject to change without notice or obligation. Square footage and other dimensions are approximate. Images such as rendering, photos and floor plans may be shown with optional features and/or third-party additions that may not be available in all regions.

Winchester

CHAMPION®
HOME BUILDERS

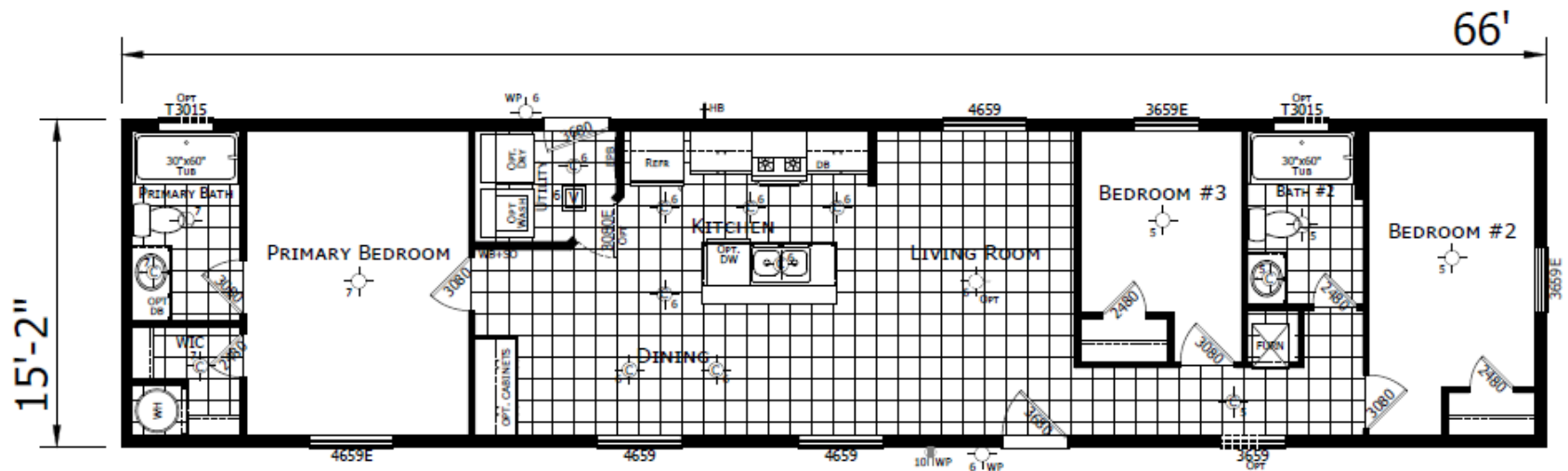
MODEL 1666H32A6H

3 BEDROOM, 2 BATH

ACTUAL SIZE: 15'2" X 66'

TOTAL AREA: 1,001 SQ. FT.

IDAHO



Due to continuous product development and improvement, prices, specifications and materials are subject to change without notice or obligation. Square footage and other dimensions are approximate. Images such as rendering, photos and floor plans may be shown with optional features and/or third-party additions that may not be available in all regions.

Winchester

CHAMPION®
HOME BUILDERS

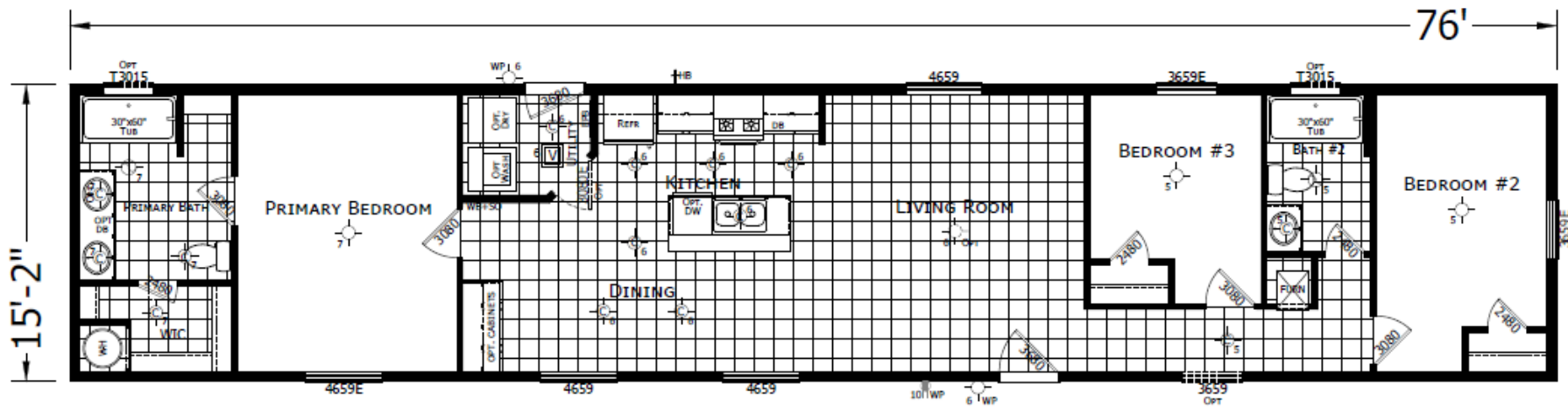
MODEL 1676H32A6H

3 BEDROOM, 2 BATH

ACTUAL SIZE: 15'2" X 76'

TOTAL AREA: 1,152 SQ. FT.

IDAHO



Due to continuous product development and improvement, prices, specifications and materials are subject to change without notice or obligation. Square footage and other dimensions are approximate. Images such as rendering, photos and floor plans may be shown with optional features and/or third-party additions that may not be available in all regions.